



Montana Fish, Wildlife & Parks



FISHING ACCESS SITES



Walstod FAS - located on the south end of Flothead Lake in Region 1

Montana's Fishing Access Sites (FAS) program provides recreational opportunities for residents and visitors to Montana that exists in few other areas of the United States. Totalling nearly (300) individual sites across the state, public access to Montana's lakes, rivers, and streams provides fishing opportunities that Montana is famous for.

The program has grown from a few dozen sites in the early 1960's to the present number today. Spread throughout all areas of Montana, the FASs are as diverse as the statewide fishing opportunities available to the angler. From the cold-water trout streams in the western portion of the state to the warm-water fisheries in the eastern areas of Montana, the FAS program provides public access to virtually any type of angling waters an outdoors person may desire. Marked by the leaping fish and hook symbol, the FASs are signed from the public highways and roads leading to them.

This brochure identifies Montana's Fishing Access sites and provides maps and directions for all individual FASs in each of the (7) administrative Regions of Montana Fish, Wildlife & Parks. To request additional information on the FAS program, phone numbers/addresses are provided on the back page of the brochure.

Please see the back page of this tabloid for information on camping at FASs.

Enjoy Montana's Fishing Access program as you travel around or through the state. Good luck and good angling!

FEB 12 2007

MONTANA STATE LIBRARY
115 E. 6th AVE.
HELENA, MONTANA 59602





Digitized by the Internet Archive
in 2017 with funding from
Montana State Library

STATE FISHING ACCESS SITES REGION 1

Montana State Library
3 0864 1003 7673 3



- State Fishing Access Site
- Bureau of Land Management
- Indian Lands or Reservations
- Military Reserves and Withdrawals Army Corps of Engineers
- National Forest
- National Forest Wilderness
- National Parks and Monuments
- National Wildlife Refuges
- State Lands
- Interstate Highway
- State or County Highway
- U S Highway
- Under 1,000 Corners
- 1,000 - 2,500 Townland
- 2,500 - 10,000 Livingston
- 10,000 - 30,000 Havre
- 30,000 and over Billings



Flatiron Ridge FAS north of Thompson Falls



With numerous rivers, and streams, the northwestern corner of Montana provides fishing opportunities as diverse as the region itself. Salmon and lake trout angling opportunities are available on the larger waterbodies throughout Region 1. Other species include a mixed-bag of warm- and cold-water fish species: northern pike, trout, bass, yellow perch, whitefish, grayling, and catfish. Located in the center of Region 1, Flathead Lake is the largest freshwater lake west of the Mississippi River. It provides a unique and diverse fishery throughout its' 125,250 surface acres.

Site Name	Directions	Boat launch	Toilets	Potable Water Avail.	Access for Camp Trailers	Day use only	Camping	Stay limit	Fee	All Season	Other Information
Ashley Lake	16 mi West of Kalispell on Hwy 2, then 13 mi North on Ashley Lake Road.	*	*	*	*	*	*	14	*	*	
Ashley Creek	11 mi West of Whiteshell on Hwy 93, then 1/2 mi on Rodgers Lake Road to bridge.					*				*	Undeveloped site.
Beaver Lake	6 1/2 mi NW of Whitefish on Hwy 93, right on Beaver Lake Road, follow signs for 4 1/2 mi.					*				*	Carry-in boat launch only
Bigfork	Off Hwy 35 at milepost 31.	*	*	*	*	*	*			*	
Blanchard Lake	2 mi South of Whitefish on Hwy 93, then right on Blanchard Lake Road.	*	*	*	*	*	*			*	Boat ramp at this site does not provide access to the main lake.
Bootjack Lake	15 mi NW of Whitefish on Hwy 93 Farm-to-Market Road and then onto USFS Rd. 351.					*	*			*	Site is open 4/1 thru 11/30. Carry-in boat Launch only.
Duchame	3 mi East of Polson off of Hwy 35.	*	*	*	*	*	*			*	Undeveloped site. Hand-launch only.
Flatiron Ridge	2 mi West of Thompson Falls off of Hwy 200.	*	*	*	*	*	*			*	
Frank Lake	2 mi South of Eureka on Hwy 93, then 5 mi West on County Road					*	*			*	Undeveloped site.
Glen Lake	6 mi South of Eureka off Hwy 93, then 6 mi East on County Rd.	*	*	*	*	*	*			*	
Horseshoe Lake - Ferndale	3 mi East of Bigfork on Hwy 209, then SE on County Roads for 5 mi.					*	*			*	Undeveloped site.
KoKanee Bend	14 mi N of Kalispell on Hwy 2 to milepost 136, then 3 mi West on County Rd	*	*	*	*	*	*			*	
Loon Lake - Ferndale	3 mi East of Bigfork on Hwy 209, then 2 mi South and 2 mi East on County Rd.	*	*	*	*	*	*			*	Undeveloped site.
McKay Landing	7 mi East of Thompson Falls on Hwy 200.					*	*			*	Undeveloped site.
Old Steel Bridge	Hwy 2 at Kalispell to milepost 123, then South on Shady Ln & East on Conrad Dr.	*	*	*	*	*	*			*	
Pressenine	7 mi NE of Kalispell on Hwy 2, then East on Birch Grove Rd.	*	*	*	*	*	*			*	Undeveloped site.
Skyles Lake	3 mi West of Whitefish on Hwy 93.					*	*			*	Poor access to site.
Smith Lake	7 mi West of Kalispell on Hwy 2 to milepost 112, then 3 mi South on County Rd.	*	*	*	*	*	*			*	

REGION 1 CONTINUED...

Site Name	Directions	Boat launch	Toilets	Potable Water Avail.	Access for Camp Trailers	Day use only	Camping	Stay limit	Fee	All Season	Other Information
Somers	On Hwy 93 1 mi South of Somers.	*	*	*	*	*	*	*	*	*	
Sophie Lake	1 mi NW of Eureka on Hwy 93, then 4 mi North on County Road.	*	*	*	*	*	*	14	*	*	
Sportsmans Bridge	7 mi South of Kalspell on Hwy 93 to milepost 104, then 6 mi East on Hwy 82	*	*	*	*	*	*			*	Access to Flathead River and Flathead Lake.
Swan River	3 mi East of Bigfork on Hwy 209, then 1.5 mi South and East on County Rd at Ferdale	*	*	*	*	*	*			*	Site is open 5/1 thru 12/1.
Teakettle	On Hwy 40 at Columbia Falls Bridge, milepost 7	*	*	*	*	*	*			*	
Tetrault Lake	1 mi N of Eureka on Hwy 93 to milepost 65, then 3 1/2 mi NE on County Rd.	*	*	*	*	*	*			*	
Thompson Chain of Lakes	Along Hwy 2 from 35 mi West of Kalspell to 50 mi West of Kalspell.	*	*	*	*	*	*	14	*	*	Numerous lake sites in the 20 mile length of lakes. Primitive sites.
Walsad	10 mi North of Polson on Hwy 93 at milepost 72.	*	*	*	*	*	*			*	
Whitefish River	9 mi North of Kalspell on Whitefish Stage Rd, then East on Hodgson Rd.	*	*	*	*	*	*			*	Undeveloped site
Woods Bay	14 mi South of Bigfork on Hwy 135 to milepost 27, then 1 mi West on County Rd	*	*	*	*	*	*			*	

STATE FISHING ACCESS SITES REGION 2



Johnsrad FAS northeast of Missoula

Located in the western and southwestern portion of the state, Region 2's FAS's provide fishing and general recreational access to the popular and well known Clark Fork, Blackfoot, and Bitterroot River corridors. Excellent trout fishing opportunities can be found in the streams, lakes, and rivers throughout Region 2.

REGION 2

Site Name	Directions	Boat launch	Toilets	Potable Water Avail.	Access for Camp Trailers	Dry use only	Camping	Stay limit	Fee	All Season	Other Information
Aunt Molly	East of Ovando to Hwy 141, turn south for 1 1/2 mi, then East for 3 mi to bridge.					*				*	Carry in launch.
Bass Creek	North of Stevensville on Hwy. 93					*				*	Walk-in access only. Hand launching of boats is not recommended
Beavertail Pond	26 mi East of Missoula on I90 to Beavertail Hill Exit 130.	*	*	*	*	*				*	Disabled fishing platform. Limited to manually operated or electric motor powered boats only
Bell Crossing	2 mi North of Victor on Hwy 93, then 1/2 mi East on Route 370.	*				*				*	Please reference "Montana Boating Laws" brochure for river use restrictions.
Belmont Creek	Located 10 mi. East of Johnsrud F.A.S. and 9 mi. West of Roundup F.A.S. on Ninemile Prairie Rd.					*				*	* Walk-in access only (approx. 500 yds) boat launching is not advised. * Non-motorized watercraft only for the Blackfoot River and its tributaries.
Big Eddy	I-90 to Superior Exit 47, then 1 mi. East on Old Hwy. 10.	*	*	*	*	*				*	Launching during high water in spring is difficult.
Big Pine	West of Missoula off I90 at Exit 66, head South, turn West on Fish Creek Road.	*	*	*	*	*	*	*	*	*	* 5 camping sites at this location. Site is approx. 4 1/2 mi. South of I-90. * This site is classified as a "Primitive Recreation Site"
Browns Lake	From Ovando: S.E. for 7 mi. on Hwy. 200, turn South on road 112 for 4 mi.	*	*	*	*	*	*	*	*	*	Marshy areas around lake are excellent bird viewing areas.
Cedar Meadow	From Helmville take SR 272 N.W. for 4 mi.					*				*	* Canoes/rafts can be hand launched from site. * Non-motorized watercraft only for the Blackfoot River and its tributaries.
Chief Looking Glass	From Lolo, South on Hwy 93 for 6 mi., then turn East on Chief Looking Glass Road.	*	*	*	*	*	*	*	*	*	* Canoes/rafts can be hand launched from site. * Please reference "Montana Boating Law" brochure for river use restrictions.
Clearwater Crossing	14 mi. East of Bonner on Hwy 200 and 1 mi. West of Clearwater Junction.	*	*	*	*	*	*	*	*	*	* Canoes/rafts can be hand launched from site. * Non-motorized watercraft only for the Blackfoot River and its tributaries.
Currick's Riverbend	26 mi. East of Bonner on Hwy 200 to mile post 26, then 7 1/2 mi. West on Ninemile Prairie Rd.	*	*	*	*	*	*	*	*	*	Non-motorized watercraft only for the Blackfoot River.
Cyr Bridge	West of Missoula on I90 to Exit 20. Go North on old Hwy 10. Take hard left at bridge.	*	*	*	*	*	*	*	*	*	"Raft Slide" launch structure. Note that there is no access back to I90 west-bound. Travel 4 mi. West on Frontage Rd.
Dagles Eddy	3 mi. N.E. of the Johnsrud F.A.S. on the Corridor Rd.					*				*	
Dry Creek	I90 to Dry Creek Exit 43, then North 1/4 mi., then East 1/4 mi.	*	*	*	*	*				*	
Erskine	In Frenchtown, turn South onto Ducharme St., then West on Mullan Rd. for 2 mi., then South for 1 mi.					*				*	
Florence Bridge	17 mi. South of Missoula on Hwy 93 to East side Bridge, then 1 mi. East.	*	*	*	*	*				*	* Please reference "Montana Boating Laws" brochure for river use restrictions.
Forest Grove	West of Missoula off I90 to Tarkio Exit 61 on the N. side	*	*	*	*	*	*	7	*	*	
Forks	West of Missoula off I90 at Exit 60, head South, then West on Fish Creek Road.	*	*	*	*	*	*	*	*	*	5 camping sites at this location. Site is approx. 10 mi. South of I-90.
Hannon Memorial	20 mi. South of Hamilton on Hwy 93 to milepost 27.	*	*	*	*	*	*	*	*	*	* Two areas - one is day use only & the other has 6 campsites * Please reference "Montana Boating Laws" brochure for river use restrictions
Harpers Lake	35 mi. East of Bonner on MT 200, then 2 mi. North of Clearwater Junction on Hwy 83.	*	*	*	*	*	*	7	*	*	Only non-motorized boat use allowed Disabled fishing platform. 14 campsites.
Hairy Morgan	4 mi. South of Ovando on SR 272.	*	*	*	*	*	*	*	*	*	* Canoes/rafts can be hand launched from site * 4 campsites * Non-motorized watercraft only for the Blackfoot River and its tributaries.
Johnsrud Park	11 mi. East of Bonner on Hwy 200, then West on gravel road.	*	*	*	*	*	*	7	*	*	* Day use shelter, horseshoe pits, volleyball court, and baseball diamond at this site. * Non-motorized watercraft only for the Blackfoot River and its tributaries.
Kelly Island	I90 at Missoula, Reserve St. Exit 101, then South to Spurgan Rd., then 2 mi. West.	*	*	*	*	*	*	*	*	*	Located at West Missoula. Area includes one large and eight smaller islands on Clark Fork River.
Kohrs Bend	North of Deer Lodge off I90 at Beck Hill Exit 179, then West on gravel road.					*				*	
Marco Flats	2 1/2 mi. NE of Banner on Hwy 200.					*				*	* Canoes/rafts can be hand launched from site * Non-motorized watercraft only for the Blackfoot River and its tributaries
Monture Creek	39 mi. East of Bonner to milepost 39.	*	*	*	*	*	*	7	*	*	Non-motorized watercraft only for the Blackfoot River and its tributaries
Natural Pier	West of Missoula on I90 to Exit 75, South then West for 1 mi. on Frontage Rd.	*	*	*	*	*	*	*	*	*	Access to the river is difficult
Ninemile Prairie	26 mi. East of Bonner on Hwy 200 to milepost 26, then 4 mi. West	*	*	*	*	*	7	7	7	*	* Launching boats at this site is not advised * Only 2 developed campsites at this location * Non-motorized watercraft only for the Blackfoot River and its tributaries.
Petty Creek	West of Missoula on I90 to Exit 77, 1/2 mi South.	*	*	*	*	*				*	
Poker Joe	19 mi. South of Missoula on Hwy 93, then East 1 1/2 mi on County Rd.					7				7	* Site is walk-in access only. Canoes/rafts can be hand launched from site. * Please reference "Montana Boating Laws" brochure for river use restrictions.
Red Rocks	Approx. 7 1/2 mi. East of the Johnsrud F.A.S. along the Corridor Road.					*				*	1/2 mi walk from parking area to site
River Junction	39 mi East of Bonner on Hwy 200 to milepost 39, then 9 mi SE on County Road.	*	*	*	*	*	*	7	7	*	* 6 campsites available at this site. Canoes/rafts can be hand launched from site. Road to site is very rough * Non-motorized watercraft only for the Blackfoot River and its tributaries
Roundup	26 mi. East of Bonner on Hwy 200 to milepost 26, then West on Ninemile Prairie Road	*	*	*	*	*	*	*	*	*	* "Raft slide" launch structure * Non-motorized watercraft only for the Blackfoot River and its tributaries
Russell Gates Memorial	35 mi East of Bonner on Hwy 200 to milepost 35	7	7	7	7	7	7	7	7	7	* Canoes/rafts can be hand launched from site * 12 campsites * Non-motorized watercraft only for the Blackfoot River and its tributaries.
Schwartz Creek	East of Missoula to Clinton Exit 120, South on Frontage Rd., then 2 mi. East	*	*	*	*	*	*	*	*	*	Gravel bar for launching boats
Shu Kon	N.E. out of East Missoula on old Hwy 10, at bottom of Big Hill, head South on Speedway Rd.	*	*	*	*	*	*	*	*	*	

REGION 2 CONTINUED...

Site Name	Directions	Boat launch	Toilets	Potable Water Avail.	Access for Camp Trailers	Day use only	Camping	Stay limit	Fee	All Season	Other Information
Sheep Flats	4 1/2 mi. East of the Johnsrud F.A.S. on the Corridor Rd					*					* Numerous roads skirt this area, and provide several access points to the river down a steep bank. * Non-motorized watercraft only for the Blackfoot River & its tributaries
St. John's	Access is via East bound side of I90 only. Take the scenic turnout just past Exit 70.					*					* Canoes/rfts can be hand launched from this site
St. Regis	West of Missoula off I90 to St. Regis Exit 33, North 1/4 mi., then East 1/4 mi.	*	*								* Site is operated and maintained by Mineral County
Sunset Hill	Opposite the Clearwater crossing, F.A.S. Lake Sunset Hill road South.					*					* 2 sites - one is a junction of Clearwater/Blackfoot Rivers, 2 1/2 mi. South of Hwy 200. The other one is 4 1/2 mi. South of Hwy 200. The other one is 4 1/2 mi. South of Hwy 200. Both provide walk-in access only
Tarkio	West of Missoula off I90 to Tarkio Exit 61, South and East for 1/4 mi.	*	*	*	*						
Tarkio East	West of Missoula off I90 at Exit 66, travel North, turn West on Frontage Rd. follow to end of Rd. & parking area					*					* Access to the river is difficult
Thubedeau	6 mi. East of Johnsrud F.A.S. on the Corridor Road	*	*			*	*	*	*	*	* 6 camping sites. Road is rocky and rough. Boat launching is not advised. * Non-motorized watercraft only for the Blackfoot River & its tributaries
Tucker Crossing	1 mi. South of Victor off Hwy 93.	*	*	*	*						* Please reference "Montana Boating Laws" brochure for river use restrictions
Turah	East of Missoula on I90 to Turah. Exit 113, South, then East for 2 mi.	*	*	*	*						* Canoes/rfts can be hand launched from this site
Upsala Lake	18 mi. East of Bumes on Hwy 200 to milepost 38, then 4 mi. North on Woodworth Rd.	*	*	*	*	*	7				* Catch and release fishing for bass at this site. Limited to controlled "no-wake" speed.
Wally Crawford	South of Hamilton off Hwy 93 at the Como Bridge.	*	*			*					* Please reference "Montana Boating Laws" brochure for river use restrictions.
Whitaker Budge	Approx 7 mi. East of Johnsrud F.A.S. on the Corridor Rd.	*	*			*					* Hand launching of boats is best done 300 yds downstream at an unnamd day use site. * Non-motorized watercraft only for the Blackfoot River & its tributaries.
Woodside Bridge	from Hwy 93, then East at Woodside onto Woodside Rd.	*	*	*	*						* Disabled fishing platform. * Please reference "Montana Boating Laws" brochure for river use restrictions

STATE FISHING ACCESS SITES REGION 3



This region of Montana is home to the world renowned trout fishing waters of the upper Missouri and Yellowstone River drainages. Other familiar rivers include the Big Hole, Madison, Gallatin, Jefferson, and Beaverhead Rivers. Expect to find angling opportunities for all the trout species in this area of Montana; rainbow, cutthroat, brown, and brook trout are found throughout the waters and streams of Region 3.

REGION 3

Site Name	Directions	Boat launch Trails	Potable Water Avail.	Swimming	Access for Camp Trailers Day use only	Camping	Stay limit	Fee	All Season	Other Information
Alder Bridge	At Alder, take the Ruby Dam Road S, then turn W on Judy Lane at school house. Follow road to river.	*	*	*	*				*	Leased site for access to the Ruby River. Please respect boundaries and private property.
Astell Bridge	10 miles S of Belgrade on U.S. 191, milepost 77, then 1 mile W on Astell Road.	*	*	*	*				*	
Blackbird	1 mile E of Three Forks on U.S. 10	*	*	*	*				*	
Black's Ford	23 mile W of Bozeman on MT 84	*	*	*	*				*	
Bozeman Pond	U.S. 191, W edge of Bozeman, milepost 87	*	*	*	*				*	Managed by the City of Bozeman
Browne's Bridge	6 miles S of Melrose on the Frontage Rd	*	*	*	*		7		*	
Browne's Lake	8 miles S of Melrose on I-15, Glen Exit, then 7 miles W on County Road.	*	*	*	*		7		*	Inaccessible in winter. On Beaverhead National Forest
Burnt Tree Hole	1 mile W of Ennis on MT 287, then 2 miles S on County Road	*	*	*	*				*	
Cameron Bridge	2 miles S of Belgrade on MT 85, at milepost 5, then 2 mi W on West Cameron Bridge Rd	*	*	*	*				*	
Cardwell Bridge	1 mile S of Cardwell on Secondary 359	*	*	*	*				*	
Carter's Bridge	4 miles S on Livingston on U.S. 89 then 1 mile E on Secondary 540	*	*	*	*				*	
Causteway	7 miles N of Helena on I-15 at milepost 200, then 5 mi East on Secondary 453	*	*	*	*				*	Handicapped fishing pier
Cherry River	1 mile N of Bozeman on U.S. 10	*	*	*	*				*	Walk in to river. No hunting allowed
Chicory	18 miles S of Livingston on Secondary 540, then 1 mi West on County Road	*	*	*	*				*	
Cobblestone	3 miles W of Logan on Frontage Road then 7 miles S on Madison River Road	*	*	*	*				*	Boats must be carried 100 ft to from the river
Corrals	9 miles S of Dillon on Recreational Frontage Rd	*	*	*	*				*	
Corwin Springs	48 miles S of Livingston on U.S. 89, milepost 7	*	*	*	*				*	Steep access road to site
Coy Brown Bridge	4 miles S of Alder on the Ruby Dam Road, then W on Finch Creek Road to the bridge	*	*	*	*				*	Leased site for access to the Ruby River. Please respect boundaries and private property
Daley Lake	1 mile E of Emigrant, then 4 miles S on Secondary 240, then 6 miles SE on County Road	*	*	*	*		7		*	Handicapped fishing pier, boat dock and shade shelter
Deepdale	4 miles S of Townsend on U.S. 287 to milepost 82, then 1 mi West	*	*	*	*		7		*	
Dewey	7 miles W of Divide on State Hwy 43	*	*	*	*				*	
Drouillard	2 miles W of Three Forks on Route 2	*	*	*	*		7		*	
Eight Mile Ford	1 mi. W of Ennis on MT 287 then 4 mi. S on County Rd	*	*	*	*				*	
Emigrant	23 miles S of Livingston on U.S. 89 to milepost 31, then E across bridge.	*	*	*	*				*	
Emigrant West	21 miles S of Livingston on U.S. 89 to milepost 30 on E side of Hwy to river	*	*	*	*				*	
Ennis	½ mile SE of Ennis on U.S. 287	*	*	*	*		7	*	*	Open May 1 - November 30
Erwin Bridge	4 miles W of Belgrade on Amsterdam Rd (RT 347)	*	*	*	*				*	Limited Parking
Fairweather	1 miles W of Logan on Frontage Road, then 3½ miles N	*	*	*	*				*	
Fishtrap Creek	23 miles N of Wisdom on MT 43	*	*	*	*		7		*	
Four Corners	190 at Manhattan, milepost 288, then 3 miles E on Secondary 346.	*	*	*	*				*	
Free River	2½ miles S of Livingston on U.S. 89	*	*	*	*				*	Walk in only - bridge out
Gallatin Forks	190 at Manhattan, milepost 288, then 2 miles N on Nixon Gulch Road	*	*	*	*				*	Two parcels of land at this site
Glen	19 miles N of Dillon on I-15 to milepost 85, Glen Exit, then 6 miles S on Frontage Road	*	*	*	*				*	
Greenwood Bottoms	1½ miles E of Dewey-FAS on State Hwy 43	*	*	*	*				*	Access to river is difficult
Grey Cliff	23 miles W of Bozeman on MT 84, then 6 miles N on Madison River Road	*	*	*	*				*	
Grey Owl	3 miles N of Emigrant on U.S. 89	*	*	*	*				*	
Harrison Lake	4 miles E of Harrison on County Road	*	*	*	*		7	*	*	
Helena Valley Reservoir	8 miles NE of Helena on Secondary 280	*	*	*	*				*	
Henneberry	14 miles S of Dillon on I-15 to recreation road exit then 2 miles S at I-15 underpass	*	*	*	*				*	Ramp access from east side
High Bridge	14 miles S of Dillon on I-15 to recreation road exit then 4 mi. S under I-15 bridge	*	*	*	*				*	
High Road	1 mile S of Twin Bridges on MT 41, then 2 miles W on County Road.	*	*	*	*				*	
Highway 89 Bridge	5 miles E of Livingston on 190, take U.S. 89 exit, 1 mi. N on U.S. 89	*	*	*	*				*	
Kalsta Bridge	115 S to the Glen exit. Then ¼ mile N on Frontage Rd. Site lies SW of river bridge.	*	*	*	*				*	
Kirk Wildlife Refuge	5 miles S of Gallatin Gateway on U.S. 191	*	*	*	*				*	Linear strip of Gallatin River frontage
Kountz Bridge	6 miles SW of Whitehall on County Road (Kountz Road)	*	*	*	*				*	Undeveloped site
Lempsur	17 miles W of Three Forks on State Hwy 2, across from Lewis & Clark Caverns State Park	*	*	*	*				*	Part of the Lewis & Clark Caverns State Park management area.
Loch Leven	9 miles S of Livingston on U.S. 89 to milepost 44, then 2 miles E, then 4 miles S on Secondary 540	*	*	*	*		7		*	
Lyons Bridge	31 miles S of Ennis on U.S. 287	*	*	*	*				*	Forest Service site managed by Fish, Wildlife & Parks
Madenrock	115 at Melrose, milepost 93, then 6 miles W & N on County Road.	*	*	*	*				*	Steep access road
Mallard's Rest	13 miles S of Livingston on U.S. 89 to milepost 42	*	*	*	*		7	*	*	
Mayflower Bridge	4 miles E of Whitehall on U.S. Highway 2, then 3 miles S on County Rd. (Mayflower Rd.)	*	*	*	*				*	
Mayor's Landing	SE side of the City of Livingston, near fairgrounds	*	*	*	*				*	Managed by City of Livingston
McAtee Bridge	30 miles S of Ennis on U.S. 287, then 1 mile W to river on gravel road.	*	*	*	*				*	
Meadow Lake	6 miles N of Ennis on U.S. 287 to milepost 55, then 2 miles E on County Road	*	*	*	*				*	
Milwaukee	1½ miles E of Three Forks on U.S. 10	*	*	*	*				*	Limited space to park and turn around
Notch Bottom	4 miles S of Twin Bridges on Hwy 41, then W on County Road for 10 miles	*	*	*	*		7	N	*	Not on an all weather road
Paradise	9 miles S of Livingston on U.S. 89 to milepost 44, then 2 miles E, then 4½ miles S on Secondary 540	*	*	*	*		7	N	*	
Park Lake	1 mile N of Clancy on County Rd. 426, then 10 miles SW.	*	*	*	*				*	Managed by the U.S. Forest Service.
Parrot Castle	8 mi. S of Whitehall on U.S. 55, then 3 mi. E on County Rd	*	*	*	*				*	No access to river

REGION 3 CONTINUED...

Site Name	Directions	Boat launch	Toilets	Potable Water Avail.	Swimming	Access for Camp Trailers	Day use only	Camping	Stay limit	Fee	All Season	Other Information
Pennington Bridge	4 miles S of Twin Bridges on State Hwy 41, then W on county road for 3 miles.	*	*				*				*	
Pine Creek	3 miles S of Livingston on U.S. 89, then 7 miles S on Secondary 340 to Pine Creek, then 1 mi. W on County Rd.	*	*								*	
Poindexter Slough	3 miles S of Dillon on Hwy 41	*	*								*	Walk-in area
Point of Rocks	30 miles S of Livingston on U.S. 89 at milepost 21	*	*								*	
Powerhouse	2 1/2 miles W of Divide on Hwy 43 to river bridge. Site lies on NE corner.	*	*								*	
Queen of the Waters	55 miles S of Livingston on U.S. 89										*	
Raymonds Pass	31 miles NW of West Yellowstone on U.S. 287 to milepost 8, then 1/2 mile S to bridge.	*	*			*	*	7			*	Walk-in area on east side of U.S. 87.
Ruby Dam	7 m. S of Alder on the Ruby Dam Road.	*	*				*				*	* Parking area at the site schedule for development in 1998. * Spillway area closed to fishing * Please respect private residence at site.
Salmon Fly	Melrose, MT	*	*			*	*	7			*	
Sappington Bridge	11 miles W of Three Forks on U.S. 10, then 1 mile S on U.S. 287 to bridge.	*	*								*	
Shed's Bridge	7 miles W of Bozeman on Hwy 84	*	*								*	
Sheep Mountain	4 m. E of Livingston on I-90 to milepost 340, then 2 mi. N on U.S. 89, then 4 m. E on County Road.	*	*				*	*	*	*	*	
Silver Springs Bridge	3 miles W of Sheridan on Silver Springs Road.	*	*								*	Leased site for access to the Ruby river. Please respect boundaries and private property.
Silver Star	15 miles S of Whitehall on U.S. 55	*	*			*	*				*	
Slip & Slide	44 miles S of Livingston on U.S. 89										*	
Springdale Bridge	I-90 Springdale exit to town of Springdale, then 1/2 mile N	*	*				*	7	*		*	
Three Forks Ponds	Immediately E of Three Forks	*	*								*	Managed by the town of Three Forks.
Treer Lakes	18 miles S of Helena on I-15 at Jefferson City Exit, then 3 miles SE on gravel road, then 8 miles E on pack trail.	*	*				*	*	*	*	*	Surrounded by forest Service lands in Elkhorn Mountains. Difficult access.
Toston	U.S. 287, at Toston	*	*								*	
Valley Garden	U.S. 287, 1/4 mile S of Ennis to milepost 40, then 2 miles N on County Road.	*	*				*	*	*	*	*	April 1 - November 30
Varney Bridge	1 mi. W of Ennis on U.S. 287, then 10 mi. S on County Rd	*	*				*	*	7	*	*	
Vigilante	6 miles S of Alder on the Ruby Dam Road.	*	*				*	*	7	*	*	Leased site for access to the Ruby River. Please respect boundaries and private property.
Williams' Bridge	I-90 W of Three Forks, exit 274, then 6 miles SW on State Hwy 2, then 2 miles S on Williams' Bridge Rd.	*	*				*	*	*	*	*	
York Bridge	East of Helena on York Road (Secondary 280) 13 miles	*	*				*	*	7	*	*	

STATE FISHING ACCESS SITES REGION 4



REGION 4

Eden Bridge FAS southwest of Great Falls



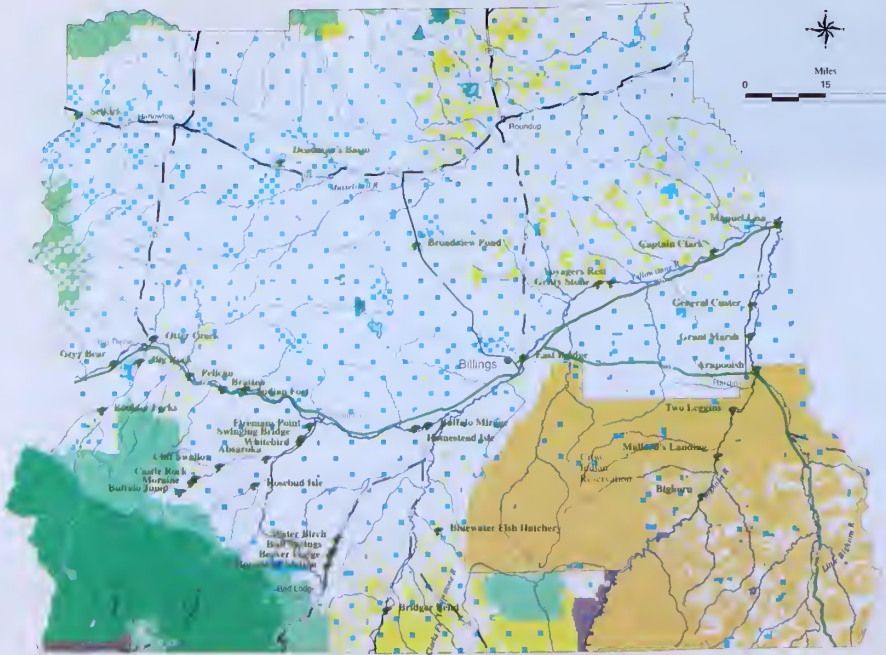
In addition to the FASs on the scenic Missouri river corridor south of Great Falls, Region 4 provides an area of transition between the western cold-water trout species and Montana's warm-water fish species. Besides trout fisheries, the reservoir sites in Region 4 provide fishing opportunities for walleyes, northern pike, catfish, bass, and yellow perch.

Site Name	Directions	Boat launch	Toilets	Potable Water Avail.	Access for Camp Trailers	Day use only	Camping	Stay limit	Fee	All Season	Other Information
Arod Lake	1 mile East of Choteau on Hwy 221, then 6 miles North on Hwy 220, 5 miles East on County Rd, then 6 miles North on County Rd	*	*				*	14	*		
Bean Lake	15 miles South of Augusta	*	*	*			*	14	*		
Big Bend	12 miles South of Great Falls					*				*	On Wilson Butte Road, not developed
Big Casino Creek Reservoir	1½ miles South of Lewistown on Big Casino Road	*	*	*	*				*		Cooperatively managed with the city of Lewistown
Brewery Flats	1 mile South of Lewistown				*					*	
Bynum Reservoir	19 miles NW of Choteau	*	*				*	14	*		
Camp Baker	17 miles West of White Sulphur Springs on Hwy 360, then 9.6 miles North on Smith River Road	*	*	*	*	*	*		*		Put-on point for Smith River float. No motorized boats allowed on the Smith River.
Carroll Trail	1 mile North of Lewistown					*				*	
Carter Ferry	27 miles North of Great Falls	*	*	*	*				*		Gravel ramp is next to county operated ferry
Craig	I-15 at the Craig Exit. Site is at the upstream side of the bridge.	*	*	*	*	*	*	14	*	*	
Dearborn	14 miles South of Cascade on I-15 at Canyon Exit 244, then 6 miles South on Recreation Road	*	*	*	*				*		
Dunes	3 miles South of Ulm	*	*	*	*	*	*		*		Carry-in boat ramp
Eagle Island	12½ miles South of Cascade upstream from Mid Canon				*				*		Island in river, no development, no signs
Eden Bridge	15 miles South of Ulm on County Road 330	*	*	*	*				*		Takeout point for Smith River float, no motorized boats
Eureka Reservoir	4 miles North of Choteau on Hwy 89 at milepost 345, then 4 miles NW on County Road	*	*			*	*	14	*		
Fort Shaw	½ mile North of Fort Shaw on County Road	*	*						*		
Hardy Bridge	4 miles South of Cascade on I-15 at Hardy Exit 247, then 4 miles South on Recreation Road	*	*	*	*	*	*	14	*		Access to river requires crossing RR tracks
Hruska	6 miles NW of Lewistown				*						
Lichen Cliff	12 miles South of Wolf Creek	*	*	*	*				*		
Loma Bridge	10 miles North of Ft. Benton	*	*	*	*				*		Access both sides of the highway bridge
Lower Carter Pond	10 miles NE of Lewistown				*				*		
Martinsdale Reservoir	1 mile East of Martinsdale	*	*	*	*	*	*	14	*		
Mid-Canon	12 miles South of Cascade	*	*	*	*				*		Hand launch site; rafts/canoes
Mountain Palace	14 miles South of Cascade at Cascade at Canyon Exit 244, then 1 mile North on Recreation Road	*	*	*	*	*	*		*		
Nilan Reservoir	10 miles West of Augusta on County Rd	*	*	*	*	*	*	14	*		
Pelican Point	6 miles South of Cascade	*	*	*	*	*	*	14	*		
Pishkun Reservoir	½ mile South of Choteau on Hwy 287, then 19 miles SW on County Road.	*	*	*	*	*	*	14	*		
Prewett Creek	4 miles South of Cascade on I-15 at Hardy Creek Exit 247, then 3 miles South on Recreation Road	*	*	*	*	*	*	14	*		
Prickly Pear	26 miles North of Helena on I-15 at Spring Creek exit 219, then 3 miles North on Recreation Road	*	*	*	*	*	*		*		
Smith River	13 miles NW of White Sulphur Springs	*	*	*	*	*	*	14	*		
Spite Hill	41 miles North of Helena on I-15 at Craig Exit 234, then 5 miles North on Recreation Road.	*	*	*	*	*	*	14	*		
Spring Creek	3 miles South of Lewistown				*				*		2 sites approx 1 mile apart both signed
Stickney Creek	41 miles North of Helena on I-15 at Craig Exit 234, then 4½ miles North on Recreation Road	*	*	*	*	*	*	14	*		*
Table Rock	8 miles South of Wolf Creek	*	*	*	*				*		
Truly Take-out	8 miles SE of Ulm	*	*	*	*	*	*		*		Day floats on Smith River below Eden Bridge
Ulm Bridge	½ mile SE of Ulm	*	*	*	*				*		
Upper Carter Pond	11 miles NE of Lewistown	*	*	*	*				*		
White Bear	7 miles South of Great Falls, off Fox Farm Road	*	*	*	*	*	*		*		Natural area, unsigned, no vehicle access
Willow Creek Reservoir	5 miles NW of Augusta on Gibson Reservoir Road	*	*	*	*	*	*	14	*		
Wolf Creek Bndge	35 miles North of Helena on I-15 at Wolf Creek Exit 226, then 2 miles North on Recreation Road	*	*	*	*	*	*	14	*		

STATE FISHING ACCESS SITES REGION 5



0 Miles 15 30



- State Fishing Access Site
- Bureau of Land Management
- Indian Lands or Reservations
- Military Reverses and Waterways Army Corps of Engineers
- National Forest
- National Forest Wilderness
- National Parks and Monuments
- National Wildlife Refuges
- Montana State Lands
- Interstate Highway
- State or County Highway
- U.S. Highway
- Under 1,000 Cover
- 1,000 - 2,500 Townsend
- 2,500 - 10,000 Livingston
- 10,000 - 30,000 Havre
- 30,000 and over Billings

MONTANA

Castel Rock FAS south of Columbus



Located in south-central Montana, Region 5 boasts a mixture of FASs on both cold- and warm-water fisheries. A world class trout stream, the Bighorn River is a popular fishing destination for anglers from all parts of the United States. Other significant water bodies where FASs are provided in Region 5 include Rock Creek north of Red Lodge, and the Stillwater, Musselshell, and mainstem of the Yellowstone Rivers.

Site Name	Directions	Boat launch	Toilets	Potable Water Avail.	Access for Camp Trailers	Day use only	Camping	Stay limit	Fee	All Season	Other Information
Absaroka	19 miles W of Absarokee on Hwy 420, Johnson Co. Rd.	*	*	*	*					*	Small area, used for floater stops
Arapoosh	1 mi. East of Hardin on Hwy 47, 2 mi. East on County Rd.	*	*	*	*					*	Jointly managed site between Bighorn Co. & DFWP. No alcohol allowed. (Closed Nov. March)
Beaver Lodge	6 miles North of Red Lodge on Hwy 212 at milepost 72	*	*	*	*			7		*	Small, remote site
Big Rock	On Boulder River, 4 miles South of Big Timber	*	*	*	*			7		*	Remote site
Bighorn	29 miles South of Hardin on Hwy 313	*	*	*	*			7	*	*	Heavily used by outfitters. Termination point for upper river floaters
Bluewater Fish Hatchery	30 miles South of Laurel on Hwy 310 to milepost 32, then 9 miles SE on County Road	*	*	*	*			7		*	Located adjacent to the Bluewater Fish Hatchery complex.
Boulder Forks	17 miles South of Big Timber off Hwy 298	*	*	*	*			7		*	Popular F.A.S. on the upper Boulder River
Bralten	16 miles E of Big Timber on I-90, 2 miles E on Frontage Rd.	*	*	*	*			7		*	Good access to the Yellowstone River for fishing/floatng
Bridge Bend	30 miles South of Laurel on Hwy 310 to Bdnger, then 13 miles South on Hwy 72									*	Undeveloped Site. No facilities.
Broadview Pond	25 miles North of Billings on Hwy 3 at Broadview							7		*	Undeveloped Site.

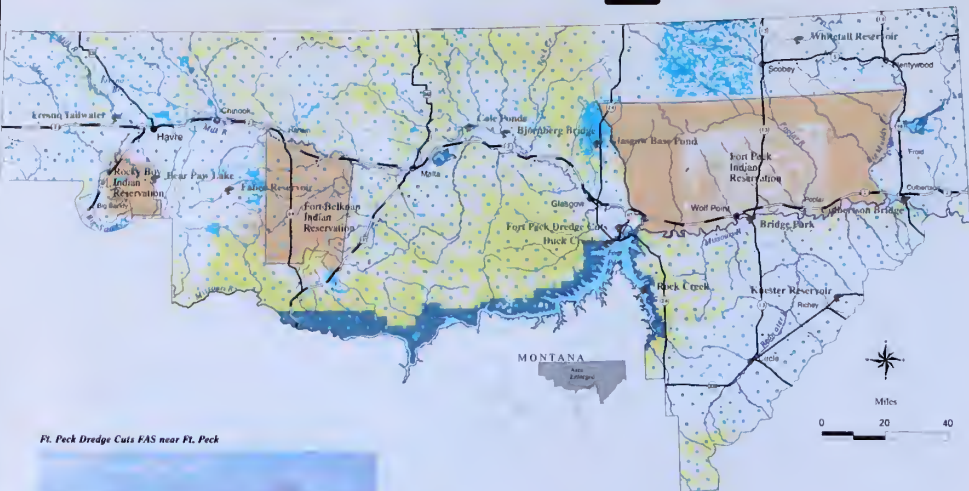
REGION 5 CONTINUED...

Site Name	Directions	Boat launch	Toilets	Potable Water Avail.	Access for Camp Trailers	Day use only	Camping	Stay limit	Fee	All Season	Other Information
Buffalo Jump	21 miles SW of Absarokee on Hwy 419	*	*	*	*	*	*	*	*	*	
Buffalo Mirage	7 miles East of Laurel on I-90 to Park City Exit, 6 miles SE on County Road.	*	*	*	*	*	*	*	*	*	Good access to the Yellowstone River
Bull Springs	7 mi. N of Red Lodge on Hwy 212, 1/4 mi. E on County Rd.	*	*	*	*	*	*	*	*	*	
Captain Clark	8 miles West of Custer on County Rd	*	*	*	*	*	*	*	*	*	
Castle Rock	23 miles West of Absarokee on Hwy 420	*	*	*	*	*	7	*	*	*	Spectacular scenery
Cliff Swallow	10 miles East of Absarokee on Hwy 420	*	*	*	*	*	*	*	*	*	
Deadman's Basin	20 miles East of Harlowton on Hwy 12 to milepost 120, 1 mile North	*	*	*	*	*	*	*	*	*	Popular reservoir site
East Bridge	2 mi. E of Billings on Frontage Rd near I-90 Lockwood Exit	*	*	*	*	*	*	*	*	*	Boat access point close to Billings
Fireman's Point	2 miles SW of Columbus on Hwy 78, then 1/2 mile West on County Road.	*	*	*	*	*	*	*	*	*	
General Custer	13 miles North of Hardin on Hwy 47	*	*	*	*	*	*	*	*	*	
Grant Marsh	7 miles North of Hardin on Hwy 47, then 1 mile East on county road.	*	*	*	*	*	*	*	*	*	
Grey Bear	I-90 Exit 392, North to Frontage Rd., then 5 miles West, turn right at Dehart Exit	*	*	*	*	*	*	*	*	*	Large open area for camping and picnicking
Gritty Stone	3 miles North of Worden on County Road 14	*	*	*	*	*	*	*	*	*	Access to the lower Yellowstone River between Billings and Custer
Homestead Isle	Yellowstone River South of Park City (No vehicle access)									*	Island site - River access only - No facilities
Horsehair Station	3 miles North of Red Lodge on Hwy 72	*	*	*	*	*	7	*	*	*	
Indian Fort	I-90 Exit 392, North to Frontage Rd. at Reed Point, across bridge to 1st left.	*	*	*	*	*	*	*	*	*	
Mallard's Landing	5 miles North of St. Xavier on Hwy 313	*	*	*	*	*	*	*	*	*	Upper Big Horn River access - Good fishing & Boating opportunities
Manuel Lisa	6 miles East of Custer on Frontage Rd.	*	*	*	*	*	*	*	*	*	Last access point on the Big Horn River - Close to the mouth of the Yellowstone River
Mozaine	24 miles West of Absarokee on Hwy 420	*	*	*	*	*	7	*	*	*	Upper Stillwater River access
Otter Creek	2 miles North of Big Timber on Hwy 191, then 1 1/2 miles East on Howie Road.	*	*	*	*	*	*	*	*	*	Upper Yellowstone River access
Pelican	1 mile NE of Greycliff on County Rd	*	*	*	*	*	7	*	*	*	Upper Yellowstone River access
Rosebud Isle	3 miles South of Absarokee on Hwy 78, then 3 miles SW on Hwy 419 to Fishtail.	*	*	*	*	*	*	*	*	*	
Selkirk	19 miles West of Harlowton on Hwy 12	*	*	*	*	*	7	*	*	*	
Swinging Bidge	6 miles SW of Columbus on Hwy 78, then 1 mile West on gravel road.	*	*	*	*	*	*	*	*	*	
Two Leggins	8 miles S of Hardin on Hwy 313 at Two Leggins Bridge	*	*	*	*	*	*	*	*	*	Located on the Crow Indian Reservation - Good access to the Big Horn River
Voyager's Rest	1 1/2 miles NE of Worden on Hwy 312, then 2 miles North on County Road 18.	*	*	*	*	*	*	*	*	*	
Water Birch	9 miles North of Red Lodge on Hwy 212 at milepost 79	*	*	*	*	*	7	*	*	*	
White Bird	6 1/2 miles South of Columbus on Hwy 78, then 1/2 mile NW on gravel road.	*	*	*	*	*	7	*	*	*	

Cliff Swallow FAS south of Columbus



STATE FISHING ACCESS SITES REGION 6



Ft. Peck Dredge Cuts FAS near Ft. Peck



- State Fishing Access Site
- Bureau of Land Management
- Indian Lands or Reservations
- Military Reserves and Withdrawals Army Corps of Engineers
- National Forest
- National Forest Wilderness
- National Parks and Monuments
- National Wildlife Refuges
- State Lands
- Interstate Highway
- State or County Highway
- U.S. Highway
- Under 1,000 Acre
- 1,000 - 2,500 Township
- 2,500 - 10,000 Livingston
- 10,000 - 30,000 Havre
- 30,000 and over Billings

The Region 6 area provides FASs on very diverse bodies of water with a large array of angling opportunities. FASs exist on both of the major river systems in the Region. The lower Missouri, which is the largest river stem in Montana, and the Milk River which is a prairie river originating to the north in Canada. The Region also provides access to the states largest reservoir, Ft. Peck Reservoir (240,000 surface acres). The FASs in Region 6 provide the public with some of the best access to warm-water fish species such as walleye, northern pike, sauger, bass and yellow perch. Additionally, the cold-water species that are available include rainbow, lake, and brown trout as well

Site Name	Directions	Boat launch	Toilets	Potable Water Avail.	Access for Camp Trailers	Day use only	Camping	Stay limit	Fee	All Season	Other Information
Bearpaw Lake	21 miles South of Havre on Hwy 234	*	*	*	*	*	*	*	*	*	No motors of any type/kind are allowed on boats in lake.
Bjonberg Bridge	7 mi. East of Saco on Hwy 2, 4 mi. North on County Road	*	*	*	*	*	*	*	*	*	
Bridge Park	6 miles SE of Wolf Point on Hwy 13	*	*	*	*	*	*	*	*	*	
Cole Ponds	10 miles NW of Saco on Hwy 243	*	*	*	*	*	*	*	*	*	
Culbertson Bridge	3 miles SE of Culbertson on Hwy 16	*	*	*	*	*	*	*	*	*	
Duck Creek	2 mi. NW of Ft. Peck on Duck Creek Bay of Ft. Peck Reservoir.	*	*	*	*	*	*	*	*	*	Undeveloped Site as of winter 1998
Faber Reservoir	20 miles South of Chinook on Hwy 240	*	*	*	*	*	*	*	*	*	
Fresno Tailwater	11 miles West of Havre on Hwy 200, 1 mile South	*	*	*	*	*	*	*	*	*	Camping is available on COE administered land adjacent to this site
Ft. Peck Dredge Cuts	5 miles NE of Ft. Peck on Hwy 117	*	*	*	*	*	*	*	*	*	Camping is available on BOR administered land adjacent to this site
Glasgow Base Pond	20 miles North of Glasgow on Hwy 24	*	*	*	*	*	*	*	*	*	No wake restoration for watercraft operated on this reservoir.
Kuester Reservoir	5 miles East of Richey on Hwy 200	*	*	*	*	*	*	*	*	*	
Rock Creek	30 miles South of Ft. Peck on Hwy 24, 7 miles West on County Road.	*	*	*	*	*	*	*	*	*	Camping is available on COE administered land adjacent to this site.
Whitetail Reservoir	7 miles North of Flaxville on Hwy 511	*	*	*	*	*	*	*	*	*	Small fishing boats can be launched from gravel boat ramps



STATE FISHING ACCESS SITES

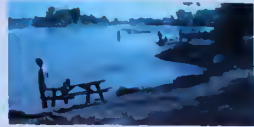


REGION 7



The FASs located throughout Region 7 provide trout fishing opportunities, but represents an area of the state with excellent angling for Montana's warm-water fish species. These include catfish, crappie, paddlefish, sauger, bass, and walleye. In addition to several reservoir sites, Region 7 includes all of the lower Yellowstone River system from its' western boundary to the North Dakota border.

Rosebud East FAS near Forsyth



- State Fishing Access Site
- Bureau of Land Management
- Indian Lands or Reservations
- Military Reserves and Withdrawals
Army Corps of Engineers
- National Forest
- National Forest Wilderness
- National Parks and Monuments
- National Wildlife Refuges
- State Lands
- Interstate Highway
- State or County Highway
- U.S. Highway
- Under 1000' Elevation
- 1,000 - 2,500' Elevation
- 2,500 - 10,000' Elevation
- 10,000 - 30,000' Elevation
- 30,000 and over Billings



MONTEANA

Site Name	Directions	Boat launch	Toilets	Potable Water Avail.	Access for Camp Trailers	Day use only	Camping	Stay limit	Fee	All Season	Other Information
Amelia Island	20 miles west of Forsyth on I94, Exit 67, 3 miles north OT Hysham, 1 mile north on County Rd.									*	Hand launch small craft. Primitive site.
Bonfield	1 1/2 mile NW of Miles City, Hwy 489 to Kinsey, NE on County Road 7 miles.	*	*							*	
Broadus Bridge	1/2 mile south west of Broadus on Hwy 59									*	Primitive site. No boat access.
Diamond Willow	Hwy 16, 1 1/2 mi. south of Sidney, 2 1/2 mi. east on Hwy 23, 7 mi. NE on County Rd., 1 mi. N on County Road.									*	Primitive site. Hand-launch small craft.
Elk Island	Hwy 16, 1 mile north of Savage, east 2 miles on County Rd.	*								*	
Fallon Bridge	I90, exit 185 east, Frontage Rd. north 2 miles	*								*	
Far West	10 miles east of Forsyth on I94, north at exit 102, east on Frontage Rd. 1 mile, north 1 mile on Highway 446, west one mile on County Rd.	*	*	*		*	7			7	Boat launch 1/2 mile west of camp area.
Gartside Reservoir	Hwy 16, 1 mile north of Crane, west 1 mile on County Rd.	*	*	*		*	7			*	Non-motorized boats only. Hand-launch
Hollecker Pond	I94, exit 213, north on Hwy 16 1 mile, turn left		*	*						*	Managed by the city of Glendive
Intake Dam	I94, exit 213 north, off at Glendive, 16 miles NE on Hwy 16, 2 miles east on County Rd.	*	*	*	*	*	14	*		*	Potable water available 5/15 thru 10/1
Johnson Reservoir	21 mi. N of Glendive on Hwy 200S to Lindsay, N 6 mi. on County Rd. 470, east 2 1/2 miles on County Rd.					*				*	Non-motorize watercraft only
Kinsey Bridge	1 1/2 miles NW of Miles City on Hwy 59, Hwy 489 to Kinsey, 4 miles SW on County Rd.	*	*	*		*				*	
Little Powder River	1 mile SE of Broadus on Hwy 212, NE 4 miles on County Road.					*				*	Primitive site
Myers Bridge	5 1/2 miles west of Hysham on Hwy 311.	*								*	
Powder River Depot	6 miles SW of Terry on Hwy 10.									*	Carry in boat launch site.
Roche Juane	Hwy 59 to NW edge of Miles City	*				*				*	
Rosebud East	I94, exit 95, NW into Forsyth, 1/2 mile N on 15th St.	*	*	*	*	*	7	*		*	Campground open 5/15 to 11/1
Rosebud West	I94, exit 93, north 1/2 mile on Hwy 12.	*	*	*	*	*		*		*	Dangerous diversion dam 1/2 mile downstream of site
Rush Hall	17 miles N of Baker on Hwy 7, two miles W on County Rd. then 1 mile S.	*				*				*	Private site. Lease expires in 1999. Season 4/15-10/15
Seven Sisters	1 mile east of Crane on County Rd.	*								*	
Sidney Bridge	1 1/2 miles S of Sidney on Hwy 16, 1 1/2 miles E on Hwy 23.	*	*	*	*	*				*	
South Sandstone	5 miles S of Plevna on County Rd. then 2 miles E	*	*	*	*	*	7	*		*	"No wake" restrictions
Twelve Mile Dam	12 miles S of Miles City on Hwy 59, 1 mile SW of Tongue River Rd. (Hwy 332)	*	*	*	*	*	7	*		*	Handicapped accessible fishing pier.



Leafy Spurge

NOXIOUS WEEDS

Noxious weeds, including spotted knapweed and leafy spurge:

- infest millions of acres
- reduce habitat for fish, wildlife, and livestock.
- choke out native plant species.
- increase soil erosion and stream sedimentation.
- limit recreational opportunities.
- cost millions of dollars each year in Montana

Be a good land steward:

- learn to identify noxious weed species.
- prevent their spread.
- support noxious weed management efforts.

Camping at FASs – Please note that a fee is charged for camping at many FASs across Montana. All of the fees generated go toward maintenance efforts at FASs. Due to changing use situations, there are likely to be specific FASs added to or deleted from the fee sites listed at the time of this printing. Thanks in advance for your support and cooperation.

For more information on Montana's
FAS program please contact:

REGION 1
490 North Meridian Rd.
Kalispell, MT 59901
(406) 752-5501

REGION 5
2300 Lake Elmo Dr.
Billings, MT 59105
(406) 247-2940

REGION 2
3201 Spurgin Rd.
Missoula, MT 59804
(406) 542-5500

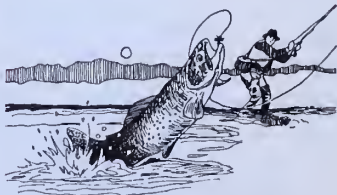
REGION 6
Route 1 - 4210
Glasgow, MT 59230
(406) 228-3700

REGION 3
1400 South 19th
Bozeman, MT 59715
(406) 994-4042

REGION 7
PO Box 1630
Miles City, MT 59301
(406) 232-0900

REGION 4
4600 Giant Springs Rd.
PO Box 6610
Great Falls, MT 59406
(406) 454-5840

STATE HEADQUARTERS
MT Fish, Wildlife & Parks
1420 East 6th Avenue
PO Box 200701
Helena, MT 59620-0701
(406) 444-2535



A portion of the funding for the developments at many of the FASs (boat ramps, latrines, parking areas/roads, etc.), is provided by the Federal Sport Restoration Program.



Your purchase of fishing equipment and motor boat fuels supports Sport Fish Restoration and boating access facilities.

Map production was funded in-part through StreamNet, a Columbia Basin fisheries and wildlife informational services program funded by the Bonneville Power Administration. Montana FWP is a StreamNet cooperator with staff located in Kalispell.



150,000 copies of this public document were published at an estimated cost of 71¢ per copy, for a total cost of \$111,350.00, which includes \$11,350.00 for printing and \$0 for distribution.